

Case Study

Baterias Moura

Introduction

Baterias Moura is a company that makes automobile batteries. located in Pernambuco State, northeast of Brazil.

Moura produces 500,000 batteries per year.

Objective

Transporting products from the recycling of batteries, lead oxide and lead metal to a shed situated at a higher level of quota than the plant, eliminating the movement of tractors and trucks in the plant and also eliminate dirt caused during the process.

Another objective was to eliminate the need for forklift to remove the containers that were receiving material, dust, from the bag filters.

Process

The used batteries are recycled to be used to make new ones. They used everything from the recycling process: plastic, lead, others.

In order to separate these materials they used a water segregation.

To make a new battery, 95% comes from recycling.

Problem

Discharge Point
Metallic Lead

Discharge Point
Lead Oxide



Great dirt caused by the process of plant
and traffic of trucks and tractors

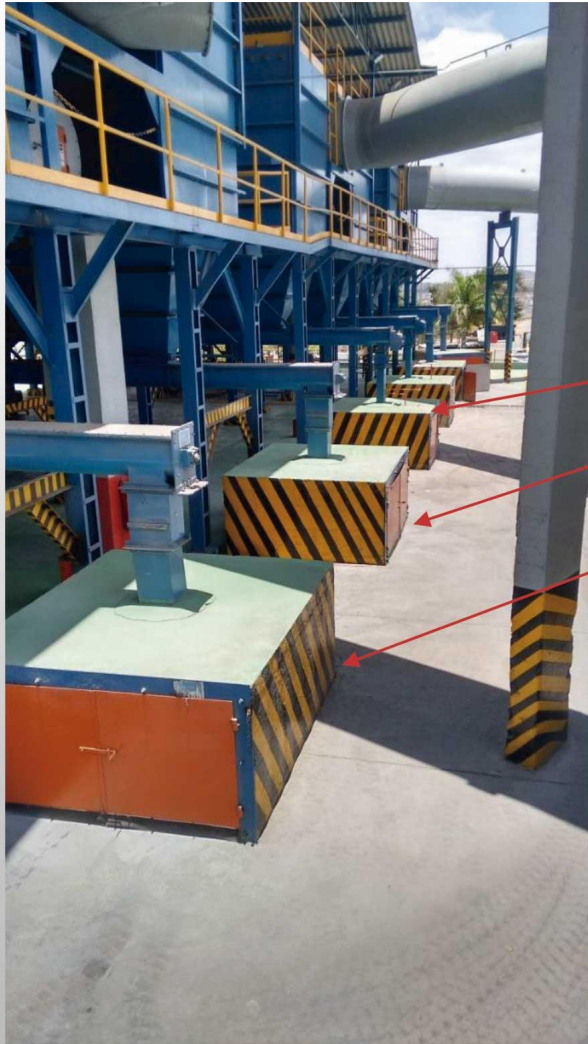
Problem



The material comes from the crushers by a screw conveyors and is laid up in the bays.

They used tractor and trucks to move this material from the bays to the shed

Problem



Laborious process to take the dust from the bag filters deposited in those containers and transporting by forklift to the shed



This is a picture of the shed that the materials will be conveyed

Solutions

Installed the Drag's: Moura 1 , Moura 2 and Lead Oxide to conveying the material from the lower plant to the shed, eliminating the need to the tractor and trucks to do this job.

Installed the dust filter Drag to convey the bag filters dust instead to use the forklift to take the containers

Solutions

We installed the Drag's: Moura 1 , Moura 2 and Lead Oxide Drag to conveying the material from the lower plant to the shed, eliminating the need to the tractor and trucks to do this job.



Solutions

We installed the Drag's: Moura 1 , Moura 2 and Lead Oxide Drag to conveying the material from the lower plant to the shed, eliminating the need to the tractor and trucks to do this job.



Solutions

We installed the Drag's: Moura 1 , Moura 2 and Lead Oxide Drag to conveying the material from the lower plant to the shed, eliminating the need to the tractor and trucks to do this job.



Solutions

We installed the Drag's: Moura 1 , Moura 2 and Lead Oxide Drag to conveying the material from the lower plant to the shed, eliminating the need to the tractor and trucks to do this job.



Solutions

We installed the Drag's: Moura 1 , Moura 2 and Lead Oxide Drag to conveying the material from the lower plant to the shed, eliminating the need to the tractor and trucks to do this job.



Solutions

Installed the dust filter Drag to convey the bag filters dust instead to use the forklift to take the containers

